



Children's
of Alabama



**CENTER FOR PALLIATIVE
AND SUPPORTIVE CARE**



ORGANIZATIONAL CHART

AFFILIATED CENTERS

- INTEGRATIVE CENTER FOR AGING RESEARCH
- CENTER FOR OUTCOMES AND EFFECTIVENESS RESEARCH & EDUCATION
- CENTER FOR AIDS RESEARCH
- COMPREHENSIVE CANCER CENTER
- CENTER FOR NURSING RESEARCH
- MINORITY HEALTH RESEARCH CENTER
- CENTER FOR EXERCISE MEDICINE

STEERING TEAM

DIRECTOR
ASSOCIATE DIRECTORS

ADMINISTRATIVE DIRECTOR
FOR SERIOUS ILLNESS
ADMINISTRATIVE DIRECTOR
ASSISTANT DIRECTORS

GGPC DIVISION DIRECTOR

RODNEY TUCKER, MD, MMM
MARIE BAKITAS, DNSC, CPRN
RONIT ELK, PHD
SYLVIA HUANG, PHD, MA, MED
JENNIFER HICKS, MSHA, MBA

ARAS ACEMGIL, MBA
ASHLEY NICHOLS, MD
STEPHEN HOWELL, DNP
SUSAN MCCAMMON, MD
NICK ODOM, PHD, MSN
SHENA GAZAWAY, PHD
KEN BOOCKVAR, MD-EX-OFFICIO

COMMUNITY ADVISORY
BOARD & CENTER LIAISONS

SE INSTITUTE FOR
INNOVATION IN PALLIATIVE &
SUPPORTIVE CARE AT UAB

ALABAMA COMPREHENSIVE
CANCER CONTROL
COALITION

ALABAMA DEPARTMENT OF
PUBLIC HEALTH

CLINICAL WORKGROUP
NICHOLS & HOWELL

***VA PALLIATIVE
CARE CLINICAL
PROGRAMS***

- SAFE HARBOR UNIT
- INPATIENT CONSULTATION
- AMBULATORY CLINIC

***UAB PALLIATIVE
CARE CLINICAL
PROGRAMS***

- PCCU
- INPATIENT CONSULTATION
- SUPPORTIVE CARE & SURVIVORSHIP CLINIC
- CAREGIVER & BEREAVEMENT SUPPORT SERVICES
- PSYCHOLOGY & COUNSELING SERVICES
- CAPE

***COA CLINICAL
PROGRAMS***

- INPATIENT CONSULTATION
- MUSC DYS CLINIC
- NEURO-ONCOLOGY CLINIC

RESEARCH WORKGROUP
BAKITAS, ELK, ODOM, &
GAZAWAY

***PALLIATIVE CARE RESEARCH
PRIORITIES***

- INCREASING ACCESS TO PALLIATIVE AND SUPPORTIVE CARE IN RURAL & UNDER RESOURCED POPULATIONS
- ADDRESSING CULTURE, LIVED EXPERIENCES AND RACISM; TOWARDS HEALTH EQUITY
- SYMPTOM SCIENCE
- IMPROVING CAREGIVER SUPPORT & BEREAVEMENT CARE
- ENHANCING COMMUNICATION SKILLS AMONG PATIENTS & PROVIDERS

GRECC CTAC
BEACON NPCRC

**SIIPSC
WORKGROUP**
ELK & BAKITAS

- INNOVATION SUMMIT
- CULTURAL TRAINING
- NETWORKING PLATFORMS
- SPECIALIZED TRAINING AND WEBINARS

**EDUCATION
WORKGROUP**
HUANG &
MCCAMMON

***FELLOWSHIP
COMMITTEE***
KEZAR

- PALLIATIVE CARE LEADERSHIP CENTER (PCLC)
- UAB CLINICAL TRAINING ACADEMY (CTA)
- PALLIATIVE CARE SUBSPECIALTY
- NURSE PRACTITIONER PROGRAM
- PSYCHOLOGY & COUNSELING TRAINING PROGRAM

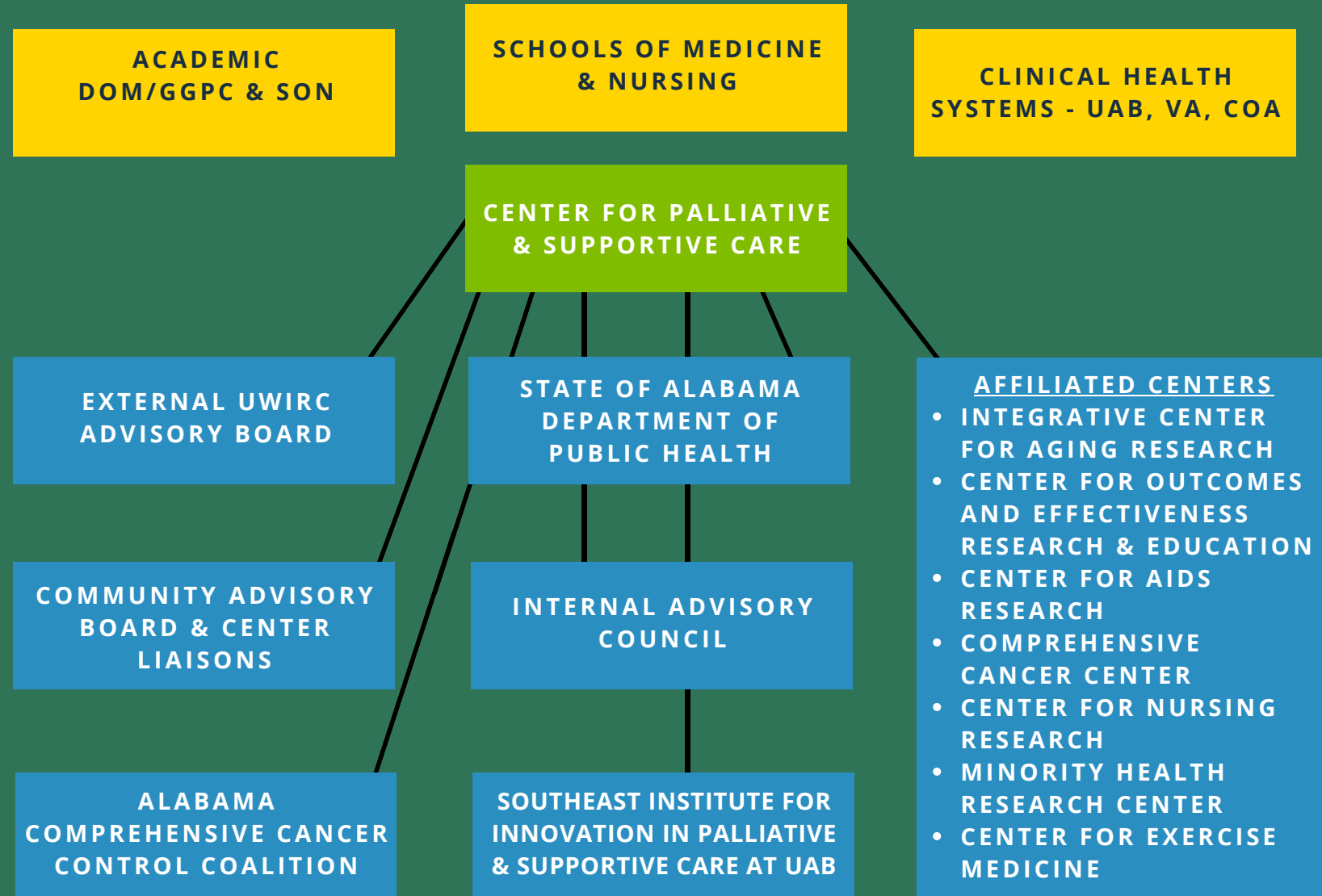
**COMMUNICATION
& ENGAGEMENT**
TUCKER & ACEMGIL

- DEVELOPMENT
- WEBSITE & SOCIAL MEDIA PLATFORMS
- PCLC/CTA MARKETING
- COMMUNITY ADVISORY BOARD
- COMMUNITY ORGANIZATIONS
- FAITH COMMUNITIES
- PAYOR PARTNERSHIPS
- CENTER NEWSLETTERS



CENTER FOR PALLIATIVE AND SUPPORTIVE CARE

RELATIONAL STRUCTURE





CENTER FOR PALLIATIVE AND SUPPORTIVE CARE

ADMINISTRATIVE STRUCTURE EXECUTIVE COMMITTEE & STEERING TEAM

